

Political Continuum of PUNJAB

A Public Opinion Survey on completion of three years of PTI's Government in Punjab



June 11-19, 2021

Innovative Strategies,

Cutting Edge Technology,

Real Insight

About IPOR

Institute for Public Opinion Research (IPOR) is an independent research institution with ability to gauge public opinion at its best on social issues, democracy and service delivery throughout Pakistan. IPOR is registered under section 32 of companies act, 1984 (XLVII of 1984) with the Security and Exchange Commission of Pakistan (SECP). IPOR's Executive Director is also a member of European Society for Opinion and Market Research (ESOMAR). It is globally recognized mark of excellence within and beyond the industry.



The results in this Report do not represent views held by IPOR. The results only represent public opinion, computed on the basis of views expressed by respondents selected through the procedure outlined in the methodology section of this Report. IPOR cannot be held liable to the users of this data. Any part of this publication can be used or cited with a clear reference to IPOR.



Survey Methodology

<i>Period :</i>	June 11-19, 2021
<i>Eligibility :</i>	Agile 18+.
<i>Response Rate :</i>	Approximately 76%
<i>Margin of Error :</i>	Not More than $\pm 2\%$ at 95% confidence level at national-level results.
<i>Sample size</i>	= 7,076

- A multi-stage probability sample was used. In the first stage, using PPS method sample was distributed into all 36 districts of Punjab.
- In the second stage, the sample was further stratified into tehsils.
- In the Third stage, households in urban areas within Union Council (UC)/Block and rural areas village/block within each UC was selected, as the Secondary Sampling Unit (SSUs) than the “Random Walk” technique was used for selecting the sample households.
- In the Fourth stage, Kish Grid selection method was used to select the respondent from the household.
- The data was collected by using CAPI (Computer Assisted Personal Interview) technique. The information in this report has been compiled in accordance with international standards for market and social research methodologies. Figures in charts and tables may not sum to 100 percent due to rounding error.

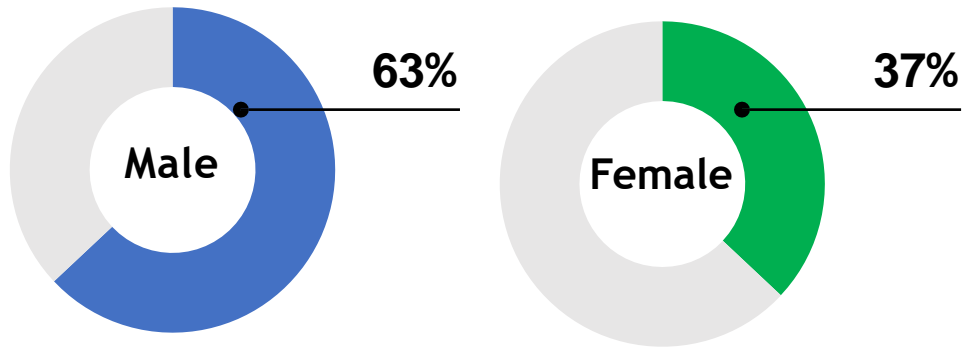
Survey Summary

This survey has been conducted with **7,076** males and females voters in all 36 districts of Punjab maintaining the urban/rural ratio. To take the entire representation of Punjab, the sample was distributed as per population ratio of each district.

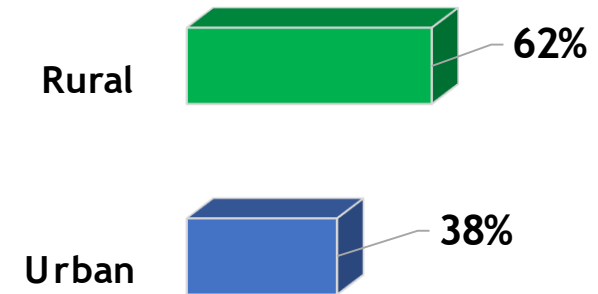
Region	% Share	Count	No of Districts
North-Punjab	10%	719	4
Central-Punjab	48%	3427	16
South-Punjab	41%	2930	16
Total	100%	7,076	36

Survey Demographic

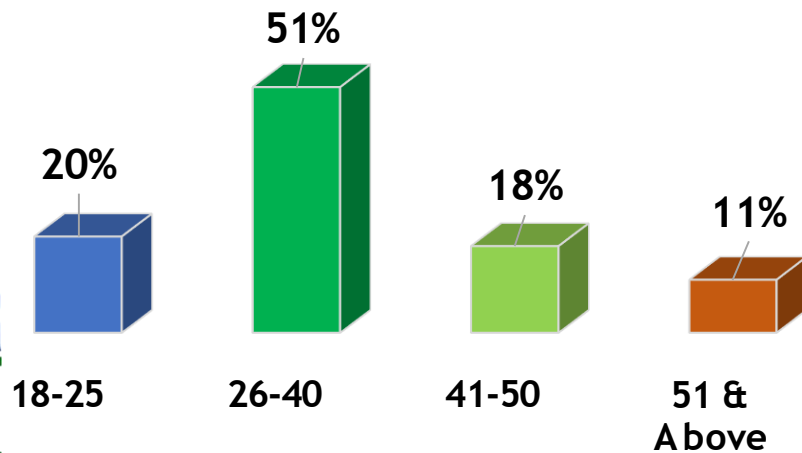
Gender



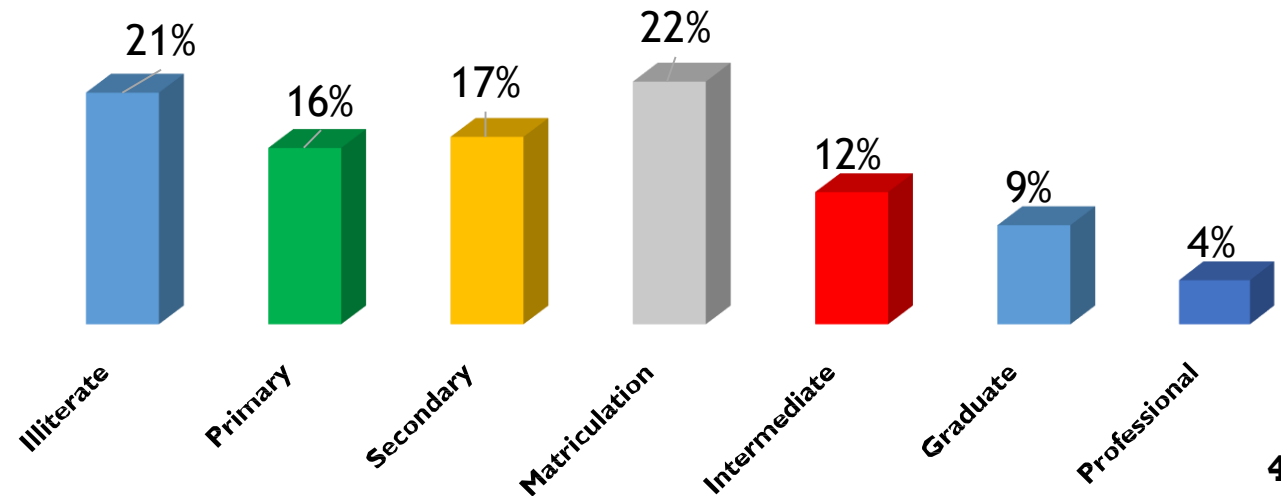
Location



Age Group

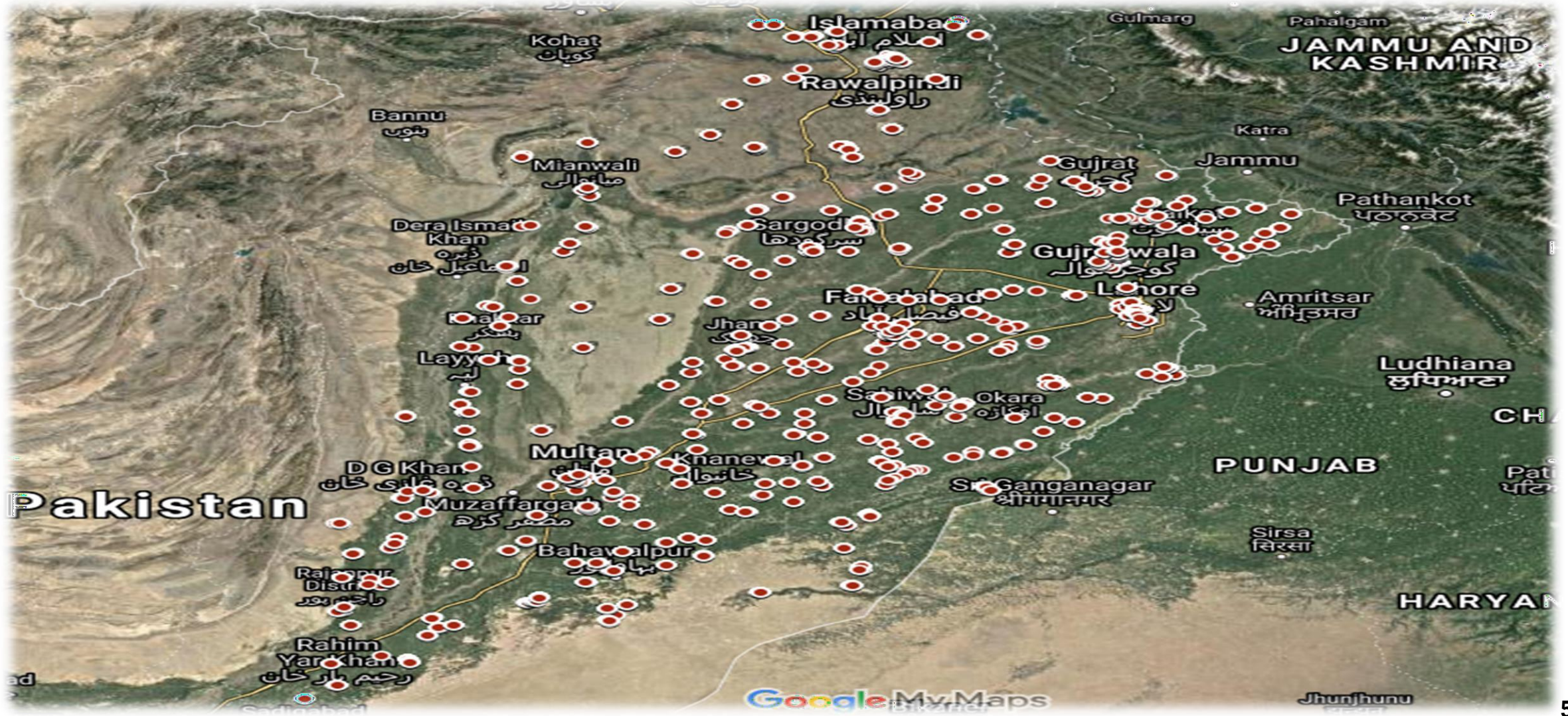


Education



Heat Map Data Collection Points

The sampled locations/villages are shown in the following map with their GPS locations .



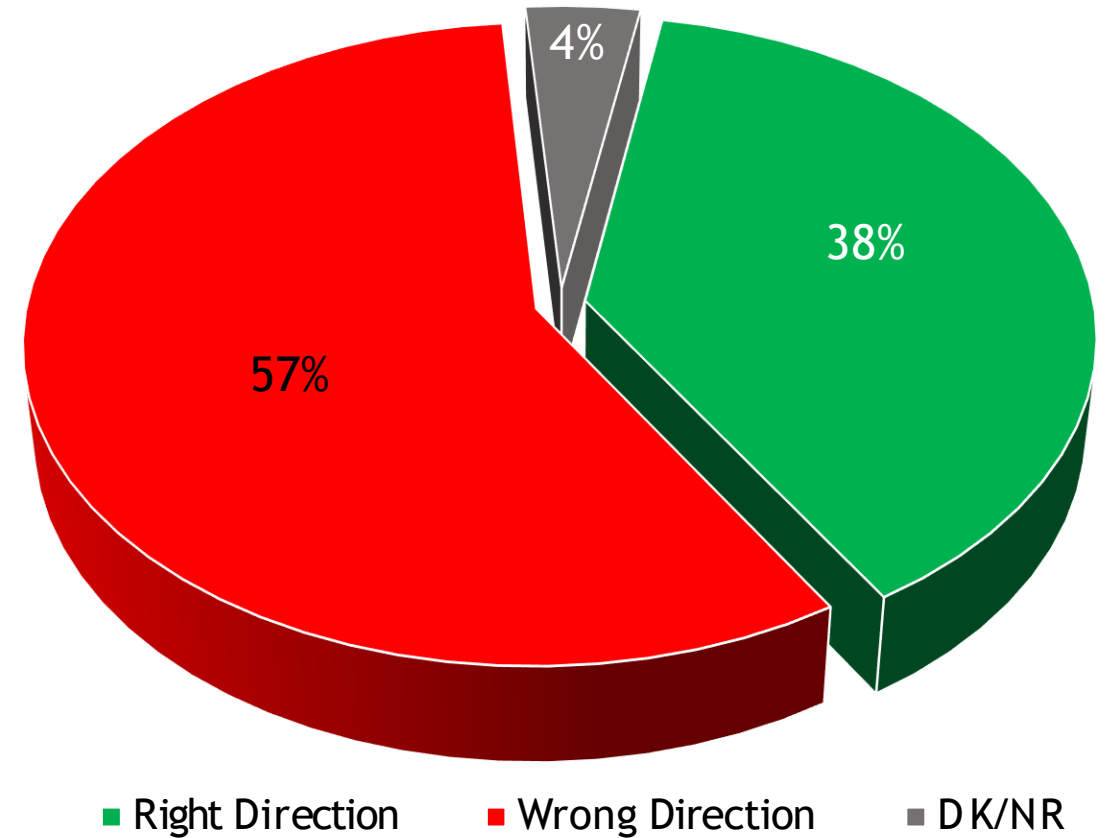
DIRECTION OF COUNTRY

Q: In general, would you say that things in Pakistan are heading in the right direction or are they heading in the wrong direction?



57% of the respondents said things in Pakistan are heading in the wrong direction. While 38% said heading in the right direction.

All Respondents



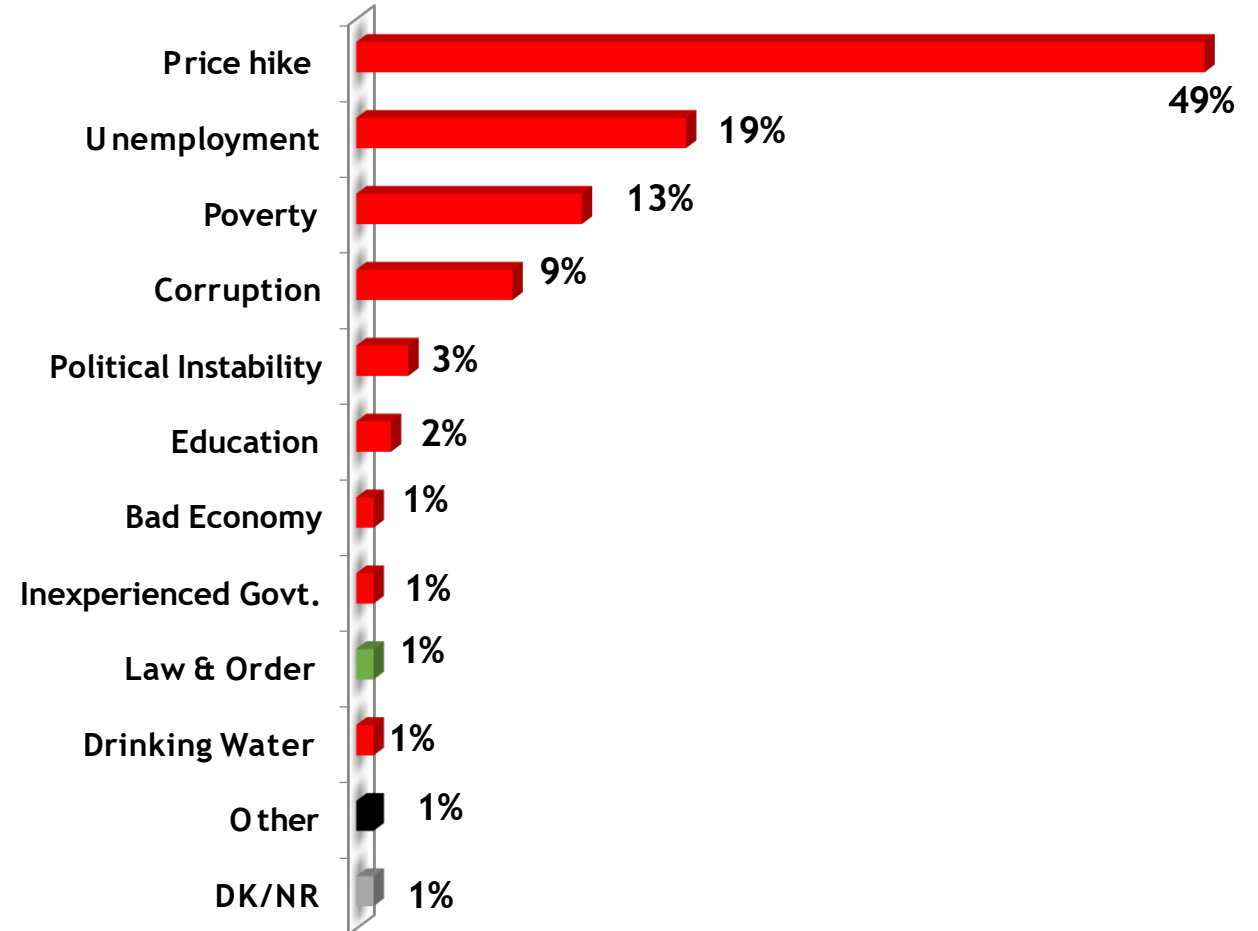
SINGLE MOST IMPORTANT ISSUE

Q: In your opinion, what is the single most important problem facing Pakistan?



49% of the Respondents reported Price hike/ inflation as the most important issue they are facing these day. While 19% of the Pakistanis said unemployment followed by 13% poverty and another 09% said corruption.

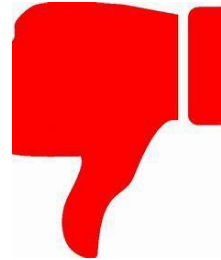
All Respondents



PERFORMANCE OF PTI'S GOVERNMENT

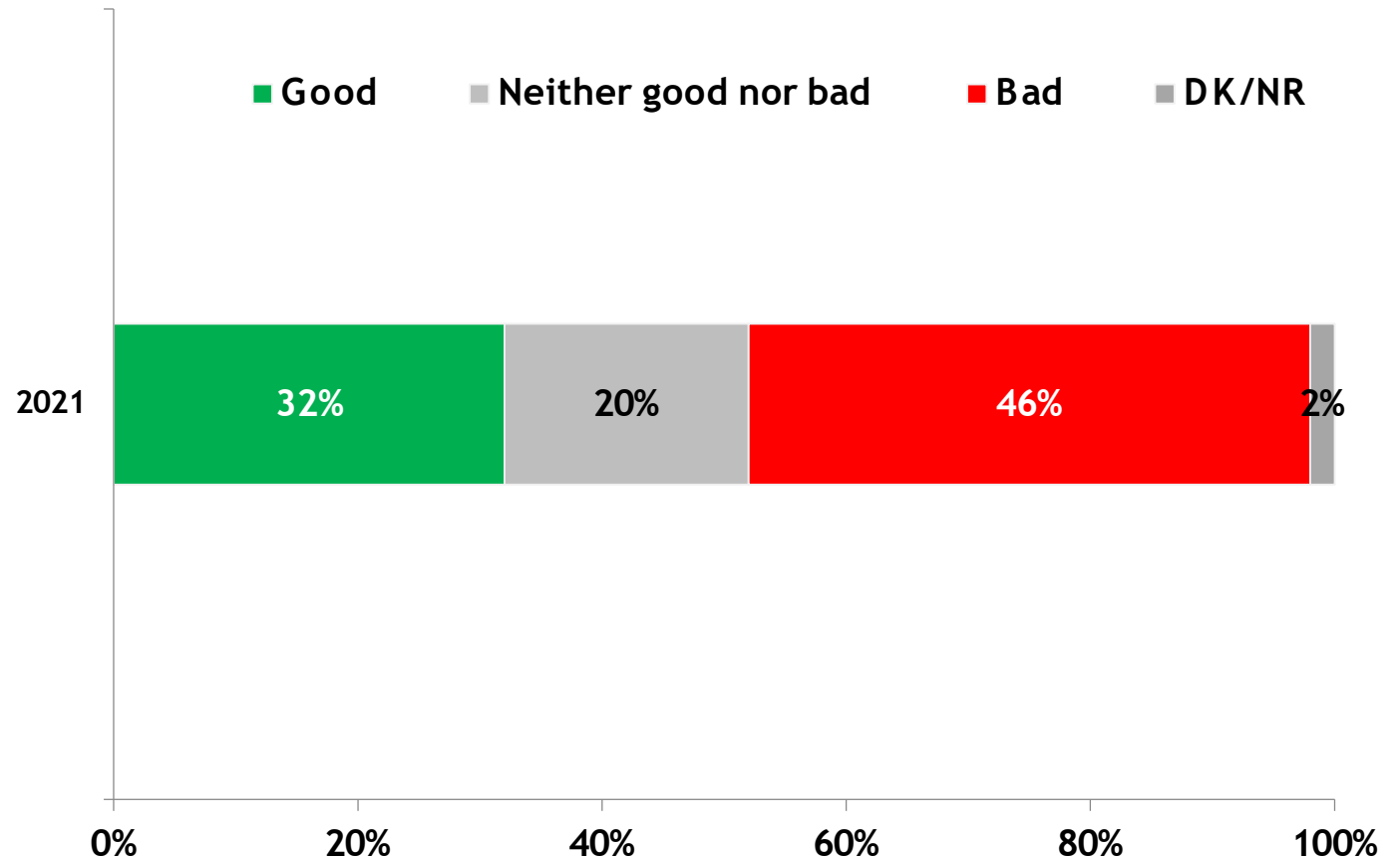
Q: Thinking now about PTI's government in Punjab, how would you rate their overall performance, good or bad?

46%



All Respondents

■ Good ■ Neither good nor bad ■ Bad ■ DK/NR

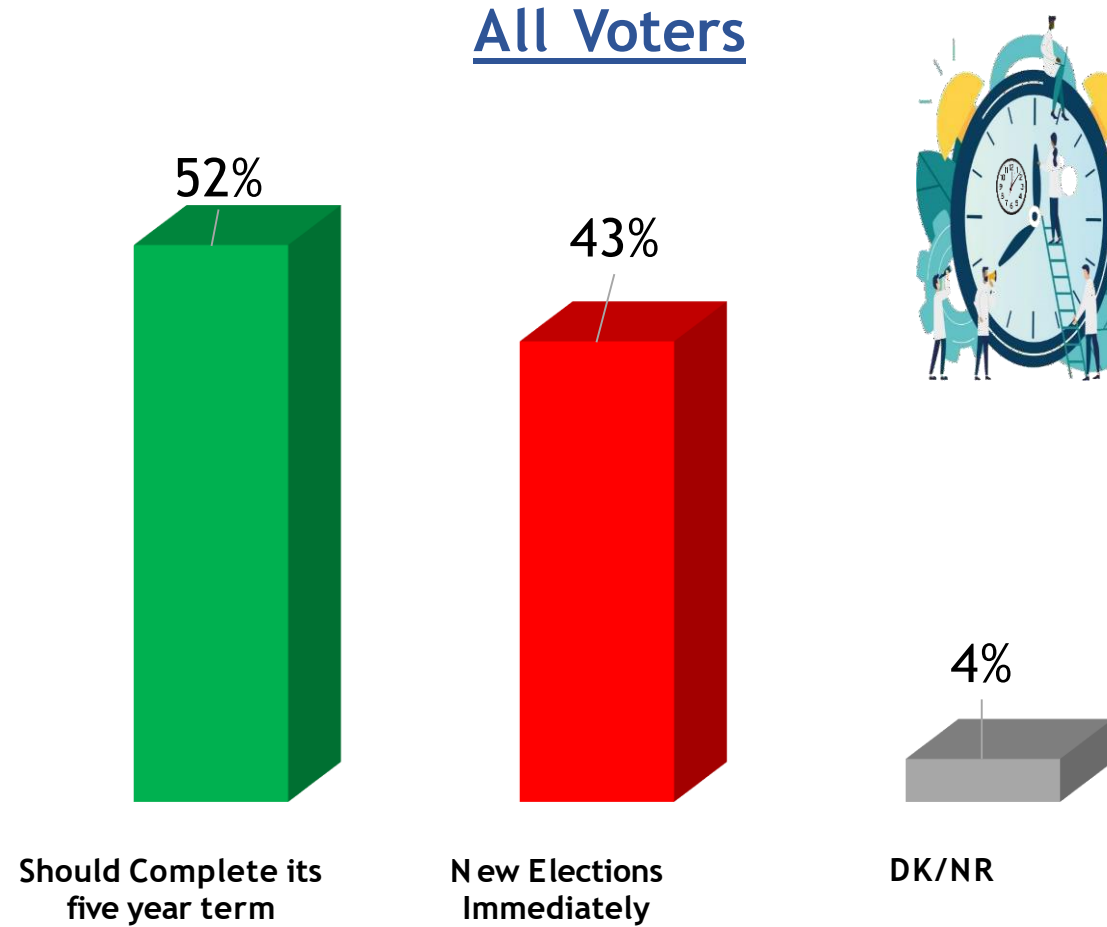


46% of the people in Punjab are rating PTI performance as bad, while PTI still enjoys support of a good 32% who are satisfied with their performance.

SHOULD PTI GOVERNMENT COMPLETE 5-YEAR TERM?

Q: Taking into consideration the economic situation of Pakistan these day, do you think PTI government should complete its five-year term or should there be a fresh elections?

Despite all the negatives, 52% of the voters are still willing to let the current government complete its 5-year term, while 43% wants an immediate new elections.



PML-N NARRATIVE

Q: There are two group of thoughts in PML-N regarding the future course of action, thinking now about these PML-N's narratives, which of the following narrative do you support the most, that PMLN leadership should adopt?



A reconciliatory narrative according to which party should work with institutions/establishment and convince them to work within constitutional boundaries.



61%

A narrative according to which strong position should be taken against the establishment's interference in politics through protests.



16%

DK/NR



22%

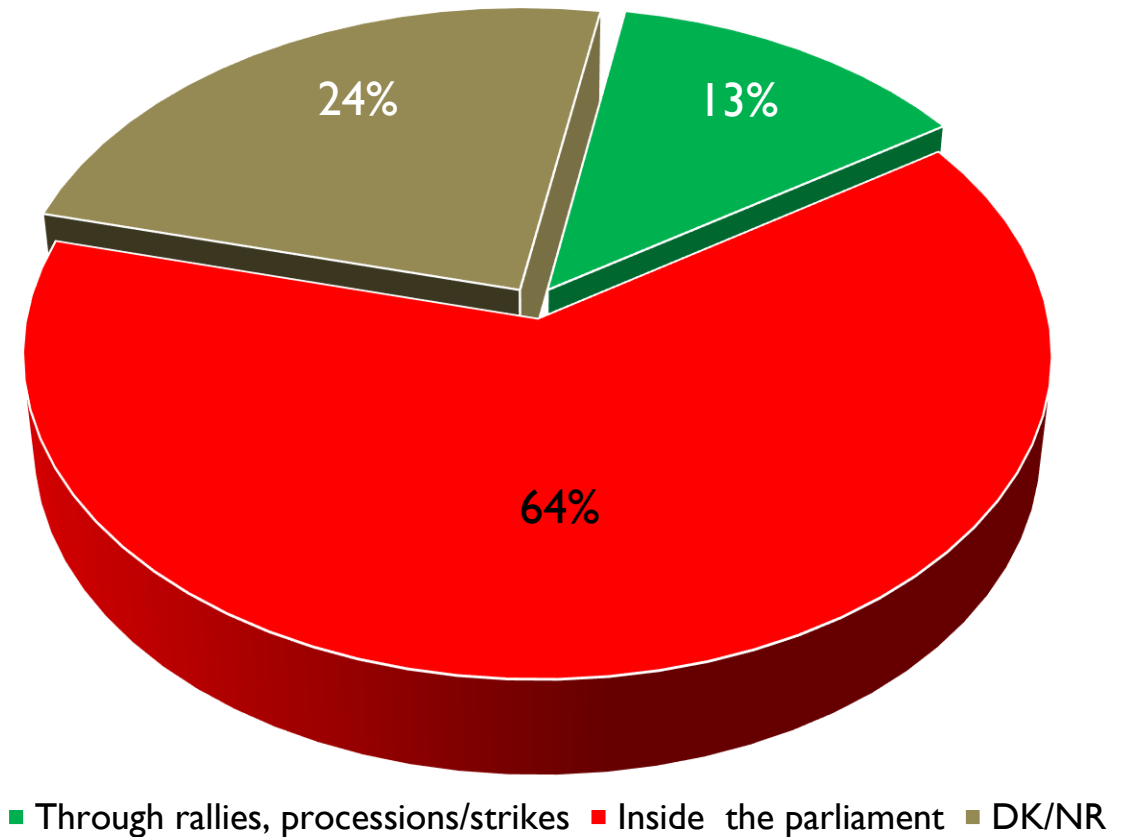
Pakistan Democratic Movement (PDM)

Q: As you know, the opposition political parties in the PDM have decided to hold rallies again, do you want the PDM to protest against the government through rallies, processions / strikes or confront the government inside the parliament?



Majority 64% of the respondents said PDM should confront the government inside the parliament and not through rallies and protests.

All Respondents

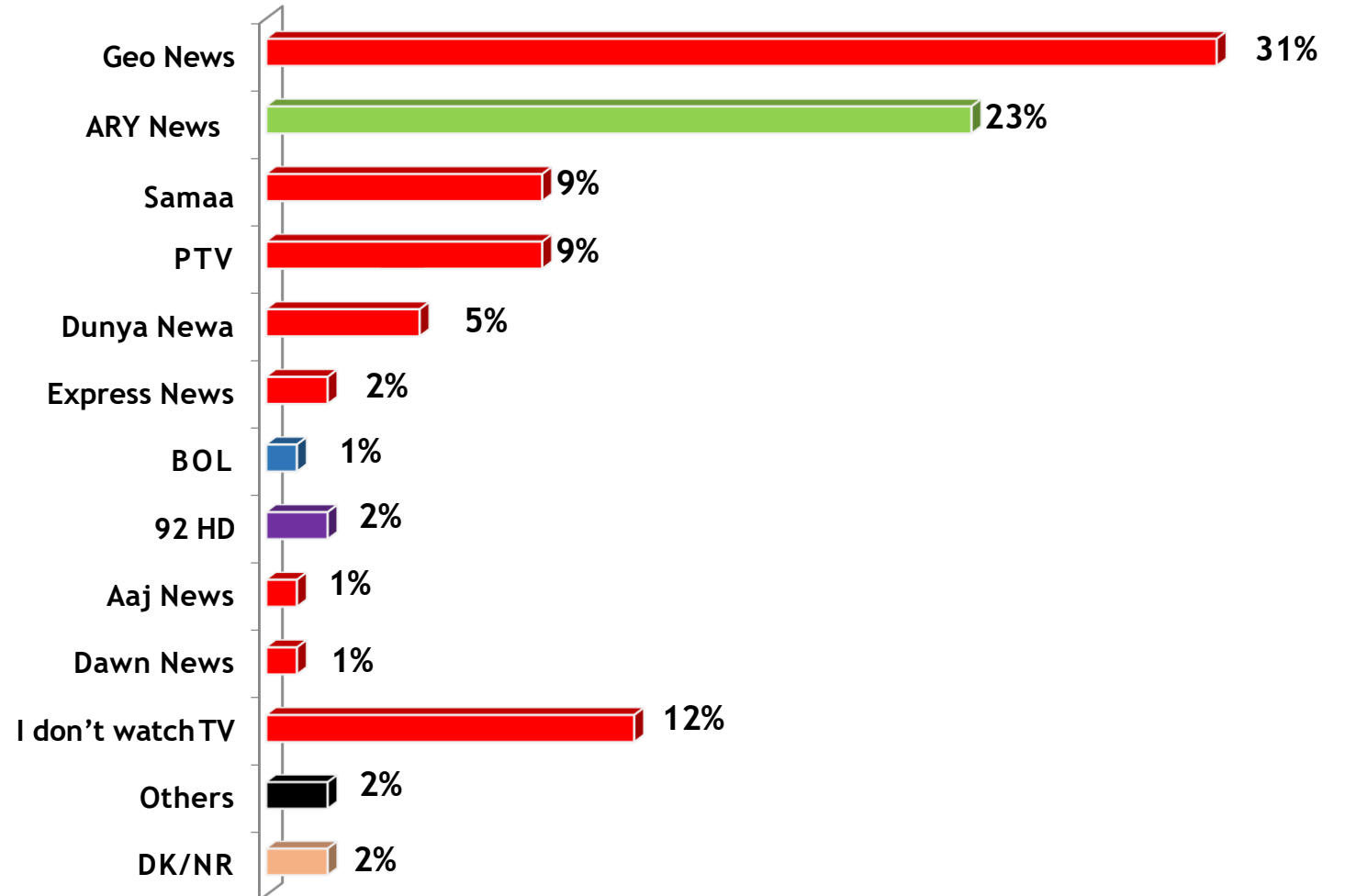


MEDIA

News Channel

Q: When you watch TV, which news channel do you most often watch?

All Respondents

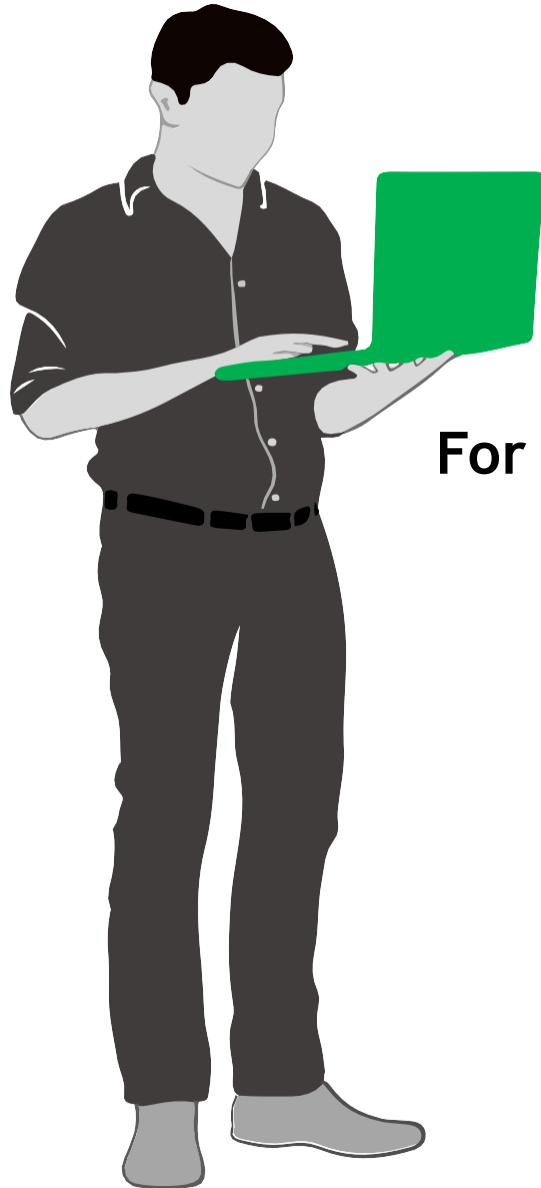


SURVEY HIGHLIGHTS









Thank you!

For any further query regarding this survey please feel free to contact.

Tariq Junaid: 92 300 8506961

Office #1-4, 2nd Floor,
Soan Complex, Soan Gardens,
Islamabad Express Way,
Islamabad, 44000, Pakistan

Tel: + 92 (51) 573 9484 / +92(51) 573 9485

URL: www.ipor.com.pk